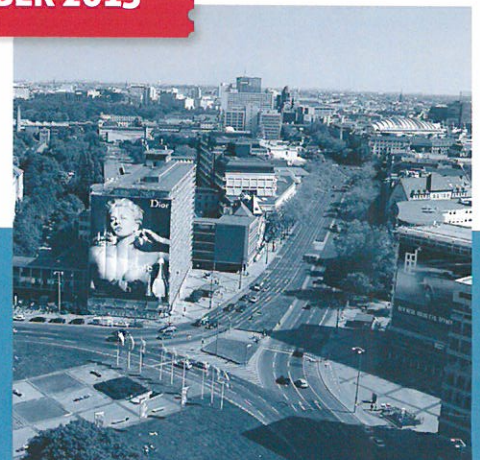


CALL OPEN UNTIL
15 OCTOBER 2015



POSTDOCTORAL FELLOWSHIP PROGRAMME FOR INTERNATIONAL FEMALE RESEARCHERS

The internationally renowned Technische Universität Berlin is located in Germany's capital city at the heart of Europe. With its seven faculties, 320 professors and more than 30,000 students, it is one of the largest technical universities in Germany. It strives to promote the dissemination of knowledge and to facilitate technological progress through adherence to the core principles of excellence and quality. The TU Berlin has extensive regional, national and international networks with partners in science and industry.

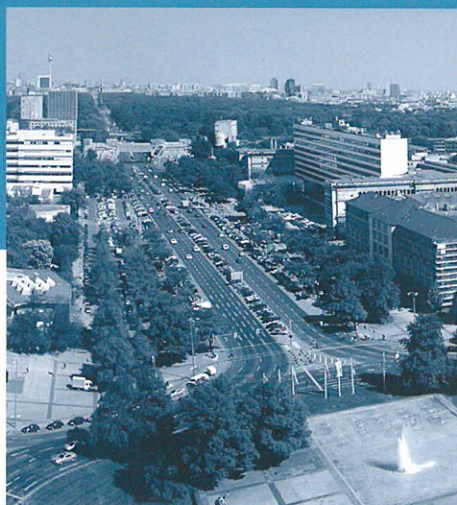
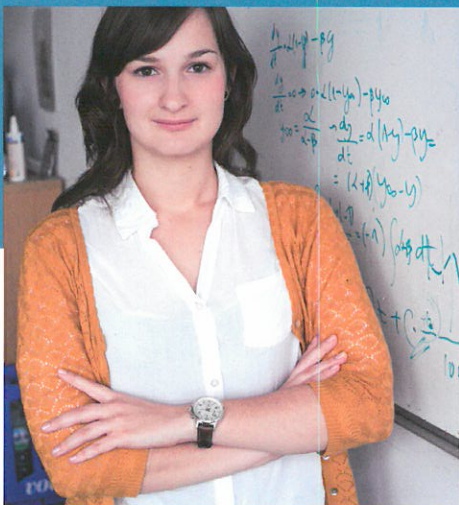
Between 2013 and 2018 the International Post-Doc Initiative (IPODI) of the Technische Universität Berlin awards 21 two-year fellowships to outstanding international researchers. The programme addresses excellent female researchers regardless of their nationality or age and is open to applications from all fields of research represented at the TU Berlin. Women returning from periods of international mobility (researching outside Germany), intersectoral mobility (working in the private sector) or non-academic mobility (e.g. after parental leave) are especially encouraged to apply.

IPODI awards seven fellowships per call in three internationally open selection rounds. The next call for applications is open between 15 July and 15 October 2015.

IPODI is co-funded by the European Union.



For current call for applications and application details visit:
www.ipodi.tu-berlin.de

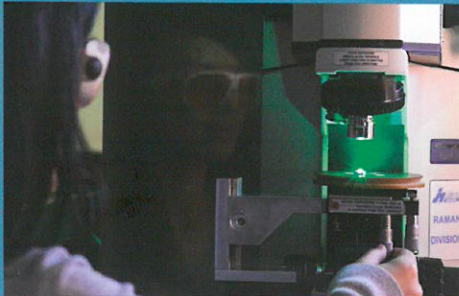


IPODI Office

Dr. Elke Gehweiler



Technische Universität Berlin
Email: elke.gehweiler@tu-berlin.de
Phone: +49 (0)30 314-79842



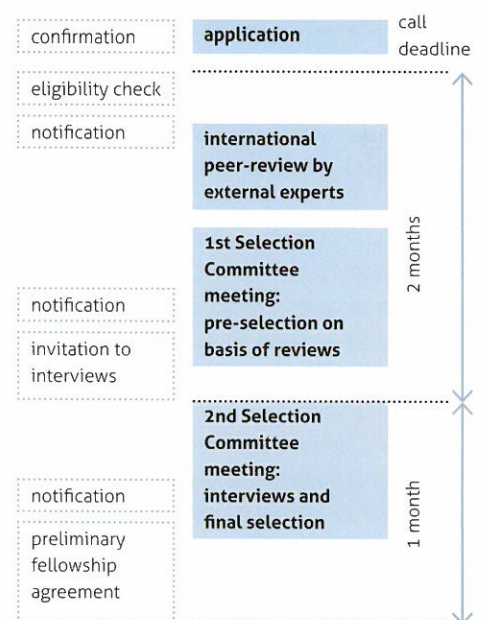
IPODI Fellows

- ... will find excellent research conditions in one of the seven faculties of the TU Berlin.
- ... will receive a two-year employment contract with salaries equal to those of the Marie Curie Programme for experienced researchers, including social security and health insurance as well as pension coverage.
- ... will receive a yearly travel allowance and a monthly contribution to research costs.
- ... will be supported by an experienced mentor of the TU Berlin.
- ... will have the opportunity to take training in the fields of research management and career development and to expand their professional networks.
- ... will be able to live in one of Europe's most exciting and vibrant capital cities.

Who Can Apply?

- Applicants must have at least two and not more than ten years of research experience after obtaining their doctoral degree.
- Applicants must not have resided in Germany for more than 12 months in the three years prior to the application deadline.
- The research proposal has to fit into one of the fields of research represented in the seven faculties of the TU Berlin.
- The research proposal has to be supported by a cooperating professor of the TU Berlin.

The IPODI Selection Process



IPODI

www.ipodi.tu-berlin.de